

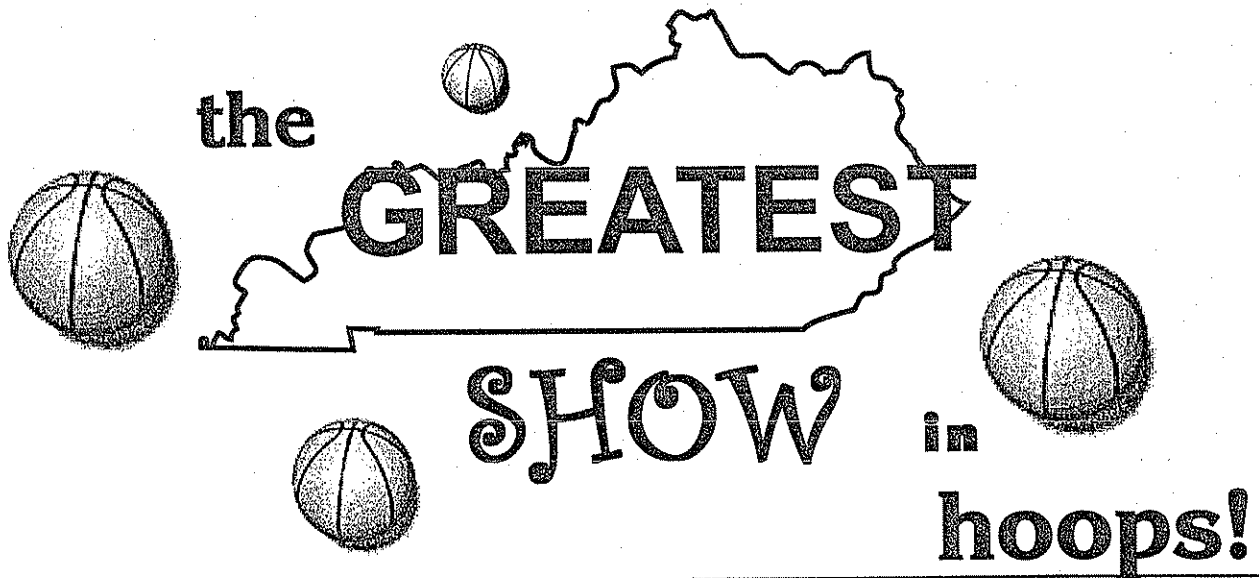
---

**2003 HOUCHENS INDUSTRIES/KHSAA  
GIRLS' SWEET SIXTEEN® STATE BASKETBALL TOURNAMENT**

---

March 26-29 • Diddle Arena • Bowling Green

---



---

**Wednesday, March 26, 2003**

**Session 1 - Game 1**

**Lexington Catholic Knights**

**vs.**

**Perry Co. Central Commodores**

**FINAL GAME STATS**

**It's Showtime!**

---

**2003 Houchens Industries/KHSAA Girls' Sweet 16 - Game Box Score**  
**Lexington Catholic Lady Knights vs. Perry County Central Commodores**  
**Date: 03/26/2003 Time: Noon CST Site: Bowling Green, KY Attendance: Unknown**

Visitors: Perry County Central Commodores															
##	Name	P	FG	3 Pt	FT	PTS	ORB	DRB	TR	PF	AST	TO	BS	ST	MIN
3	* Polly Sebastian		8/15	2/4	5/8	23	1	7	8	3	3	3	0	0	36:00
10	Lindsey King														DNP
14	* Chasity Napier		1/4	0/1	4/4	6	0	0	0	1	0	7	0	1	35:10
15	Nikki Young		1/1	0/0	0/0	2	0	0	0	1	0	1	0	1	6:40
20	Emily Brashear		1/1	1/1	0/0	3	0	0	0	0	0	0	0	0	0:11
23	* Brittany Baker		5/8	0/0	2/2	12	1	6	7	5	3	4	0	2	28:20
24	* Britta Maggard		3/6	0/0	2/5	8	3	1	4	4	1	2	0	2	33:02
31	* Kayla Combs		3/6	0/0	0/0	6	1	6	7	0	1	2	0	2	33:12
32	Danielle Caudill		0/0	0/0	0/0	0	0	0	0	0	0	0	0	0	3:35
33	Melissa Shell		0/0	0/0	0/0	0	0	0	0	0	0	0	0	0	3:00
34	Jessica Baker		0/0	0/0	0/0	0	0	0	0	0	0	1	0	0	0:50
44	Ashley Feltner														DNP
55	Erica Conway														DNP
11	June Smith														DNP
12	Alyson Holland														DNP
	Team					5	2	7							
	<b>Totals</b>		<b>22/41</b>	<b>3/6</b>	<b>13/19</b>	<b>60</b>	<b>11</b>	<b>22</b>	<b>33</b>	<b>14</b>	<b>8</b>	<b>20</b>	<b>0</b>	<b>8</b>	<b>180</b>
	<b>Total FG</b>		1st Half	9/18	50.0%	2nd Half	13/23	56.5%	Game	22/41	53.7%				
	<b>3 PT FG</b>		1st Half	0/0	0.00%	2nd Half	3/6	50.0%	Game	3/6	50.0%				
	<b>Free Throws</b>		1st Half	5/9	55.6%	2nd Half	8/10	80.0%	Game	13/19	68.4%				

Home: Lexington Catholic Lady Knights															
##	Name	P	FG	3 Pt	FT	PTS	ORB	DRB	TR	PF	AST	TO	BS	ST	MIN
4	Keyla Snowden														DNP
10	Rebecca Rhule		0/0	0/0	0/0	0	0	0	0	0	0	0	0	0	1:13
11	Lesley Server		1/3	0/2	0/0	2	0	0	0	0	0	1	0	1	9:35
12	Nikki Davis		3/6	1/1	1/2	8	2	1	3	3	2	2	0	0	18:26
14	* Sarah Schell		4/8	3/4	3/4	14	0	0	0	4	2	2	2	1	29:01
20	* Chelsea Chowning		6/14	1/4	4/6	17	0	4	4	1	5	4	1	3	35:35
22	Laura Bell		1/3	0/0	0/0	2	2	0	2	1	0	0	0	1	16:18
23	* Megan Mendenhall		1/2	1/1	0/0	3	0	1	1	2	0	0	1	0	14:15
24	* Anaris Sickles		1/2	0/0	0/0	2	0	3	3	1	2	2	0	0	18:10
25	Regina Carney		0/0	0/0	0/0	0	0	0	0	1	0	1	0	0	3:31
33	* Shannon Novosel		8/13	0/0	1/6	17	6	1	7	3	2	0	3	2	33:56
34	Aimee Bruckner														DNP
35	Dani Yannelli														DNP
	Team						0	1	1			1			
	<b>Totals</b>		<b>25/51</b>	<b>6/12</b>	<b>9/18</b>	<b>65</b>	<b>10</b>	<b>11</b>	<b>21</b>	<b>16</b>	<b>13</b>	<b>13</b>	<b>7</b>	<b>8</b>	<b>180</b>
	<b>Total FG</b>		1st Half	11/28	39.3%	2nd Half	14/23	60.9%	Game	25/51	49.0%				
	<b>3 PT FG</b>		1st Half	4/7	57.1%	2nd Half	2/5	40.0%	Game	6/12	50.0%				
	<b>Free Throws</b>		1st Half	1/2	50.0%	2nd Half	8/16	50.0%	Game	9/18	50.0%				

	PCC	LC		PCC	LC		PCC	LC
Free Throw Pts	13	9	3Pt Points	9	18	Pts/Possession	0.75	0.81
Pts off Turnovers	12	20	2nd Chance Points	11	9	Pts off Bench	5	12
Total Rebounds	33	21	Team Rebounds	7	1	Dead Ball Reb	3	3
Off Rebound %	50.0	31.3	Def Rebound %	68.8	50.0	Total Rebound %	61.1	38.9
Technical Fouls	PCC	None						
	LC	None						
Officials	Thad Padon, Joe Coldiron, Jenny Mertle							

	Qtr 1	Qtr 2	Qtr 3	Qtr 4	OT 1	OT 2	OT 3	OT 4	Total
<b>Perry County Central Commodores</b>	17	6	14	12	11	0	0	0	<b>60</b>
<b>Lexington Catholic Lady Knights</b>	15	12	10	12	16	0	0	0	<b>65</b>

**2003 Houchens Industries/KHSAA Girls' Sweet 16 - Play by Play Report - Period: 1 (pg 1)**  
**Lexington Catholic Lady Knights vs. Perry County Central Commodores**  
**Date: 03/26/2003 Time: Noon CST Site: Bowling Green, KY Attendance:**

Name	Action	Action	Score	Clock	Diff	Name	Action	Action
14 S Schell	Start Game					3 P Sebastian	Start Game	
20 C Chowning	Start Game					14 C Napier	Start Game	
23 M Mendenhall	Start Game					23 B Baker	Start Game	
24 A Sickles	Start Game					24 B Maggard	Start Game	
33 S Novosel	Start Game					31 K Combs	Start Game	
A Sickles	Jump Ball Loss			1 7:59		B Maggard	Jump Ball Win	
			0-2	1 7:40	-2	B Baker	Layup Made	
C Chowning	FG Attempt			1 7:20		B Baker	Def Rebound	
			0-4	1 6:54	-4	C Napier	FG Made	
C Chowning	FG Made	S Novosel Assist	2-4	1 6:32	-2			
S Novosel	Block	M Mendenhall Def Reb		1 6:21		B Baker	FG Attempt	
S Schell	3Pt Made	A Sickles Assist	5-4	1 6:07	+1 (L1)			
			5-6	1 5:52	-1 (L2)	K Combs	FG Made	B Baker Assist
S Novosel	FG Attempt			1 5:41		B Baker	Def Rebound	
S Novosel	Block	C Chowning Def Reb		1 5:29		B Maggard	FG Attempt	
S Schell	3Pt Made	C Chowning Assist	8-6	1 5:12	+2 (L3)			
				1 5:03		B Baker	Turnover	(Traveling)
M Mendenhall	3Pt Made	C Chowning Assist	11-6	1 4:40	+5			
				1 4:27		P Sebastian	Layup Att	B Maggard Off Re
				1 4:25		B Maggard	Putback Att	B Maggard Off Re
			11-8	1 4:22	+3	B Maggard	Putback Made	
A Sickles	Personal Foul		11-9	1 4:22	+2	B Maggard	FT Made	
A Sickles	FG Attempt			1 3:54		B Baker	Def Rebound	
				1 3:40		K Combs	FG Attempt	B Baker Off Reb
			11-11	1 3:38	(T1)	B Baker	Putback Made	
S Schell	FG Attempt			1 3:22		P Sebastian	Def Rebound	
			11-13	1 3:06	-2 (L4)	B Maggard	FG Made	
				1 3:04		P Sebastian	Personal Foul	
N Davis	Enter Game	for A Sickles		1 3:04				
N Davis	Turnover	(Bad Pass)		1 2:56				
				1 2:56				
				1 2:49		B Baker	Turnover	(Traveling)
C Chowning	Turnover	(Bad Pass)		1 2:38				
				1 2:37		B Maggard	Steal	
S Schell	Block			1 2:17		B Baker	FG Attempt	PCC Off Reb
			11-15	1 2:01	-4	B Baker	FG Made	P Sebastian Assis
M Mendenhall	FG Attempt			1 1:44		P Sebastian	Def Rebound	
M Mendenhall	Personal Foul			1 1:29				
L Bell	Enter Game	for M Mendenhall		1 1:29				
N Davis	Personal Foul			1 1:20				
				1 1:20		P Sebastian	FT Attempt	PCC Deadball Re
			11-16	1 1:20	-5	P Sebastian	FT Made	
C Chowning	3Pt Attempt	N Davis Off Reb		1 1:05				
L Bell	FG Attempt	L Bell Off Reb		1 1:01				
L Bell	Putback Att	S Novosel Off Reb		1 0:59				
S Novosel	Putback Made		13-16	1 0:58	-3			
				1 0:57		B Baker	Personal Foul	
S Novosel	FT Attempt			1 0:57		B Baker	Def Rebound	
S Novosel	Personal Foul		13-17	1 0:44	-4	B Maggard	FT Made	
S Novosel	Def Rebound			1 0:44		B Maggard	FT Attempt	
S Schell	3Pt Attempt	S Novosel Off Reb		1 0:25				
C Chowning	FG Made	S Schell Assist	15-17	1 0:20	-2			

**End of Period Summary Lady Knights 15 Commodores 17**

**Largest Lead: Lady Knights 11 Commodores 6 (5 pts)**  
**Lead in Period: Lady Knights 11 Commodores 6 (5 pts)**

**Lead Changes: 4 Ties: 1**  
**Lead Changes: 4 Ties: 1 (this period)**

**2 for 2 oppo pts**  
**4 for 4 pts**  
**6/15 for 40.0 %**  
**0/1 for 0.00 %**

**Turnovers**  
**2nd Chances**  
**Field Goals**  
**Free Throws**

**2 for 3 oppo pts**  
**4 for 5 pts**  
**7/13 for 53.8 %**  
**3/5 for 60.0 %**

2003 Houchens Industries/KHSAA Girls' Sweet 16 - Play by Play Report - Period: 2 (pg 1)  
 Lexington Catholic Lady Knights vs. Perry County Central Commodores  
 Date: 03/26/2003 Time: Noon CST Site: Bowling Green, KY Attendance:

Name	Action	Action	Score	Clock	Diff	Name	Action	Action
L Server	Enter Game	for N Davis		2 8:00				
				2 8:00		N Young	Enter Game	for C Napier
				2 8:00		J Baker	Enter Game	for B Baker
C Chowning	FG Attempt			2 7:45		K Combs	Def Rebound	
				2 7:34		J Baker	Turnover	(Bad Pass)
C Chowning	Steal			2 7:32				
C Chowning	FG Made		17-17	2 7:10 (T2)				
				2 7:10		B Maggard	Personal Foul	
				2 7:10		N Young	Leave Game	
				2 7:10		B Maggard	Leave Game	
				2 7:10		C Napier	Enter Game	for J Baker
				2 7:10		B Baker	Enter game	
				2 7:10		M Shell	Enter game	
C Chowning	FT Made		18-17	2 7:10 +1 (L5)				
N Davis	Enter Game	for S Schell		2 7:10				
				2 7:03		C Napier	Turnover	
C Chowning	Steal			2 7:02				
C Chowning	FG Attempt			2 6:51		B Baker	Def Rebound	
			18-19	2 6:28 -1 (L6)		P Sebastian	FG Made	
C Chowning	FG Attempt			2 5:46		P Sebastian	Def Rebound	
				2 5:31		P Sebastian	Turnover	(Bad Pass)
N Davis	Layup Att	S Novosel Off Reb		2 5:17				
S Novosel	Putback Att	S Novosel Off Reb		2 5:16				
S Novosel	Putback Att			2 5:14		K Combs	Def Rebound	
C Chowning	Block			2 4:58		B Baker	FG Attempt	PCC Off Reb
A Sickles	Enter Game	for S Novosel		2 4:57				
				2 4:57		D Caudill	Enter Game	for K Combs
A Sickles	Def Rebound			2 4:25		P Sebastian	Layup Att	
L Server	Layup Made	C Chowning Assist	20-19	2 4:19 +1 (L7)				
				2 4:12		B Maggard	Enter Game	for M Shell
S Schell	Enter Game	for C Chowning		2 4:12				
				2 4:09		B Baker	Turnover	(Fumble)
S Novosel	Enter Game	for L Bell		2 4:09				
L Server	Turnover			2 4:00				
				2 4:00		C Napier	Steal	
S Schell	Personal Foul		20-20	2 3:58 (T3)		C Napier	FT Made	
			20-21	2 3:58 -1 (L8)		C Napier	FT Made	
C Chowning	Enter Game	for N Davis		2 3:58				
C Chowning	3Pt Made	S Schell Assist	23-21	2 3:23 +2 (L9)				
				2 2:52		B Maggard	Turnover	(Bad Pass)
L Server	Steal			2 2:50				
S Novosel	Layup Made		25-21	2 2:42 +4				
				2 2:15		B Maggard	Turnover	(Bad Pass)
				2 2:11				
				2 2:11		K Combs	Enter Game	for D Caudill
L Server	3Pt Attempt			2 2:08		PCC	Def Rebound	
L Server	Leave Game			2 1:58				
N Davis	Enter Game	for S Schell		2 1:58				
M Mendenhall	Enter game			2 1:58				
C Chowning	Def Rebound			2 1:55		K Combs	FG Attempt	
S Novosel	FG Attempt	S Novosel Off Reb		2 1:33				
N Davis	Turnover	(Bad Pass)		2 1:31				
				2 1:24		C Napier	Turnover	(Violation)
S Schell	Enter Game	for N Davis		2 1:24				
S Novosel	FG Made		27-21	2 1:02 +6				
S Novosel	Personal Foul			2 0:36				
R Carney	Enter Game	for S Novosel		2 0:36				
				2 0:36		B Maggard	FT Attempt	PCC Deadball Reb
				2 0:36		B Maggard	FT Attempt	K Combs Off Reb
			27-23	2 0:19 +4		K Combs	Layup Made	B Baker Assist
A Sickles	Turnover	(Traveling)		2 0:05				

2003 Houchens Industries/KHSAA Girls' Sweet 16 - Play by Play Report - Period: 2 (pg 2)  
 Lexington Catholic Lady Knights vs. Perry County Central Commodores  
 Date: 03/26/2003 Time: Noon CST Site: Bowling Green, KY Attendance:

Name	Action	Action	Score	Clock	Diff	Name	Action	Action
------	--------	--------	-------	-------	------	------	--------	--------

End of Period Summary Lady Knights 27 Commodores 23

Largest Lead: Lady Knights 27 Commodores 21 (6 pts)  
 Lead in Period: Lady Knights 27 Commodores 21 (6 pts)

Lead Changes: 9 Ties: 3  
 Lead Changes: 4 Ties: 2 (this period)

3 for 2 oppo pts  
 3 for 0 pts  
 5/13 for 38.5 %  
 1/1 for 100 %

Turnovers  
 2nd Chances  
 Field Goals  
 Free Throws

7 for 7 oppo pts  
 2 for 2 pts  
 2/5 for 40.0 %  
 2/4 for 50.0 %



2003 Houchens Industries/KHSAA Girls' Sweet 16 - Play by Play Report - Period: 3 (pg 1)  
 Lexington Catholic Lady Knights vs. Perry County Central Commodores  
 Date: 03/26/2003 Time: Noon CST Site: Bowling Green, KY Attendance:

Name	Action	Action	Score	Clock	Diff	Name	Action	Action
				3 8:00		P Sebastian	Leave Game	
				3 8:00		C Napier	Leave Game	
				3 8:00		B Baker	Leave Game	
				3 8:00		B Maggard	Leave Game	
				3 8:00		K Combs	Leave Game	
S Schell	Leave Game			3 8:00				
C Chowning	Leave Game			3 8:00				
M Mendenhall	Leave Game			3 8:00				
A Sickles	Leave Game			3 8:00				
R Carney	Leave Game			3 8:00				
				3 8:00		P Sebastian	Enter game	
				3 8:00		C Napier	Enter game	
				3 8:00		B Baker	Enter game	
				3 8:00		B Maggard	Enter game	
				3 8:00		K Combs	Enter game	
S Schell	Enter game			3 8:00				
C Chowning	Enter game			3 8:00				
M Mendenhall	Enter game			3 8:00				
A Sickles	Enter game			3 8:00				
S Novosel	Enter game			3 8:00				
S Schell	Turnover	(Bad Pass)		3 7:50				
				3 7:47		K Combs	Steal	
				3 7:30		C Napier	Turnover	(Bad Pass)
C Chowning	Steal			3 7:27				
				3 7:23		B Baker	Personal Foul	
S Novosel	FT Attempt	LC Deadball Reb		3 7:23		P Sebastian	Def Rebound	
S Novosel	FT Attempt			3 7:23		B Maggard	FG Attempt	PCC Off Reb
S Novosel	Block			3 7:07		C Napier	Turnover	(Traveling)
				3 7:04				
A Sickles	Turnover	(Bad Pass)		3 6:49				
				3 6:46		B Baker	Steal	
L Bell	Enter Game	for A Sickles		3 6:33				
M Mendenhall	Personal Foul			3 6:23				
				3 6:15		P Sebastian	Layup Att	B Maggard Off Reb
S Schell	Personal Foul			3 6:14				
M Mendenhall	Block			3 5:59		P Sebastian	Layup Att	PCC Off Reb
			27-25	3 5:53 +2		P Sebastian	FG Made	
S Schell	Layup Att			3 5:42		P Sebastian	Def Rebound	
			27-28	3 5:32 -1 (L10)		P Sebastian	3Pt Made	
S Novosel	FG Made		29-28	3 5:13 +1 (L11)				
				3 5:13		B Maggard	Personal Foul	
S Novosel	FT Attempt			3 5:13		P Sebastian	Def Rebound	
C Chowning	Def Rebound			3 4:58		C Napier	3Pt Attempt	
LC	20 Sec Time Out			3 4:58				
N Davis	Enter Game	for M Mendenhall		3 4:58				
C Chowning	Turnover			3 4:46				
				3 4:46		K Combs	Steal	
			29-30	3 4:23 -1 (L12)		K Combs	FG Made	B Baker Assist
C Chowning	Turnover			3 4:10				
				3 4:09		B Maggard	Steal	
S Schell	Block			3 4:08		C Napier	Layup Att	PCC Off Reb
				3 4:00 -3		P Sebastian	FG Made	
C Chowning	Layup Made			31-32	3 3:39 -1			
				31-35	3 3:28 -4	P Sebastian	3Pt Made	
L Bell	FG Made	N Davis Assist		33-35	3 3:12 -2			
S Schell	Personal Foul			3 2:59				
				3 2:59				
				3 2:53		C Napier	Turnover	(Bad Pass)
N Davis	FG Attempt	L Bell Off Reb		3 2:33				
C Chowning	Layup Made		35-35	3 2:15 (T4)				
L Server	Enter Game	for S Schell		3 2:02				

2003 Houchens Industries/KHSAA Girls' Sweet 16 - Play by Play Report - Period: 3 (pg 2)  
 Lexington Catholic Lady Knights vs. Perry County Central Commodores  
 Date: 03/26/2003 Time: Noon CST Site: Bowling Green, KY Attendance:

Name	Action	Action	Score	Clock	Diff	Name	Action	Action
				3 1:50		K Combs	Turnover	(Bad Pass)
R Carney	Enter Game	for L Bell		3 1:50				
R Carney	Turnover	(Bad Pass)		3 1:07				
C Chowning	Personal Foul			3 1:05				
L Bell	Enter Game	for L Server		3 1:05				
L Bell	Personal Foul			3 0:55				
			35-37	3 0:41	-2	B Baker	FG Made	K Combs Assist
S Novosel	Layup Made	C Chowning Assist	37-37	3 0:30	(T5)			
R Carney	Personal Foul			3 0:08				
N Davis	Leave Game			3 0:08				
L Bell	Leave Game			3 0:08				
L Server	Enter Game	for R Carney		3 0:08				
S Schell	Enter game			3 0:08				
A Sickles	Enter game			3 0:08				
				3 0:08		P Sebastian	FT Attempt	PCC Deadball Re
A Sickles	Def Rebound			3 0:08		P Sebastian	FT Attempt	
C Chowning	3Pt Attempt	LC Deadball Reb		3 0:01				

**End of Period Summary Lady Knights 37 Commodores 37**

**Largest Lead: Lady Knights 27 Commodores 21 (6 pts)**

**Lead in Period: Lady Knights 27 Commodores 23 (4 pts)**

5 for 8 oppo pts

1 for 2 pts

5/8 for 62.5 %

0/3 for 0.00 %

Turnovers  
 2nd Chances  
 Field Goals  
 Free Throws

**Lead Changes: 12 Ties: 5**  
**Lead Changes: 2 Ties: 2 (this period)**

4 for 2 oppo pts  
 4 for 2 pts  
 6/11 for 54.5 %  
 0/2 for 0.00 %



2003 Houchens Industries/KHSAA Girls' Sweet 16 - Play by Play Report - Period: 4 (pg 1)  
 Lexington Catholic Lady Knights vs. Perry County Central Commodores  
 Date: 03/26/2003 Time: Noon CST Site: Bowling Green, KY Attendance:

Name	Action	Action	Score	Clock	Diff	Name	Action	Action
A Sickles	Layup Made	S Novosel Assist	39-37	4 7:52	+2 (L13)			
S Novosel	Personal Foul		39-38	4 7:31	+1	B Baker	FT Made	
			39-39	4 7:31	(T6)	B Baker	FT Made	
S Novosel	FG Made		41-39	4 7:17	+2			
			41-41	4 7:05	(T7)	B Baker	Layup Made	P Sebastian Assist
C Chowning	Turnover			4 6:52				
LC	Turnover			4 6:51		B Baker	Steal	
A Sickles	Def Rebound			4 6:36		K Combs	FG Attempt	
L Server	3Pt Attempt			4 6:14		P Sebastian	Def Rebound	
			41-43	4 6:07	-2 (L14)	B Maggard	Layup Made	P Sebastian Assist
				4 5:47		B Baker	Personal Foul	
C Chowning	FG Attempt	S Novosel Off Reb		4 5:45				
				4 5:44		B Maggard	Personal Foul	
L Bell	Enter Game	for A Sickles		4 5:44				
				4 5:44		M Shell	Enter Game	for K Combs
S Novosel	FT Made		42-43	4 5:44	-1			
S Novosel	FT Attempt			4 5:44		PCC	Def Rebound	
N Davis	Enter Game	for L Server		4 5:43				
				4 5:42		K Combs	Enter Game	for M Shell
				4 5:40		C Napier	Turnover	(Bad Pass)
A Sickles	Enter Game	for L Bell		4 5:40				
N Davis	3Pt Made	A Sickles Assist	45-43	4 5:25	+2 (L15)			
				4 5:25		B Baker	Personal Foul	
				4 5:25		B Baker	Turnover	
S Novosel	FG Attempt			4 5:14		B Baker	Def Rebound	
N Davis	Def Rebound			4 4:50		P Sebastian	3Pt Attempt	
S Schell	FG Attempt			4 4:38		K Combs	Def Rebound	
				4 4:31		PCC	20 Sec Time Out	
L Bell	Enter Game	for A Sickles		4 4:31				
M Mendenhall	Enter Game	for S Schell		4 4:31				
			45-45	4 4:19	(T8)	P Sebastian	FG Made	
N Davis	Layup Made		47-45	4 3:47	+2			
S Schell	Enter Game	for M Mendenhall		4 3:42				
				4 3:38		C Napier	Turnover	(Bad Pass)
S Novosel	Steal			4 3:36				
N Davis	Layup Att			4 3:20		K Combs	Def Rebound	
LC	Def Rebound			4 3:08		P Sebastian	3Pt Attempt	
				4 3:00				
				4 2:50		B Baker	Personal Foul	
				4 2:50		N Young	Enter Game	for B Baker
				4 2:50		PCC	20 Sec Time Out	
C Chowning	FT Attempt	LC Deadball Reb		4 2:50				
C Chowning	FT Made		48-45	4 2:50	+3			
				4 2:50				
M Mendenhall	Enter Game	for N Davis		4 2:50				
				4 2:48		K Combs	Turnover	
S Novosel	Steal			4 2:47				
				4 2:03		P Sebastian	Personal Foul	
C Chowning	FT Attempt			4 2:03		K Combs	Def Rebound	
			48-47	4 1:44	+1	N Young	Layup Made	
				4 1:06		B Maggard	Personal Foul	
N Davis	Enter Game	for M Mendenhall		4 1:06				
S Schell	FT Made		49-47	4 1:06	+2			
S Schell	FT Attempt			4 1:06		K Combs	Def Rebound	
S Schell	Personal Foul			4 0:43				
A Sickles	Enter Game	for L Bell		4 0:43				
			49-48	4 0:43	+1	C Napier	FT Made	
			49-49	4 0:43	(T9)	C Napier	FT Made	
LC	Time Out			4 0:11				
L Server	Enter Game	for N Davis		4 0:11				
LC	20 Sec Time Out			4 0:11				

2003 Houchens Industries/KHSAA Girls' Sweet 16 - Play by Play Report - Period: 4 (pg 2)  
 Lexington Catholic Lady Knights vs. Perry County Central Commodores  
 Date: 03/26/2003 Time: Noon CST Site: Bowling Green, KY Attendance:

Name	Action	Action	Score	Clock	Diff	Name	Action	Action
S Schell	Turnover			4 0:11				
				4 0:11		N Young	Steal	
LC	Time Out			4 0:11				
N Davis	Enter Game	for L Server		4 0:11				
L Bell	Enter Game	for A Sickles		4 0:11				
				4 0:01		P Sebastian	Turnover	
L Bell	Steal			4 0:01				

**End of Period Summary Lady Knights 49 Commodores 49**

**Largest Lead: Lady Knights 27 Commodores 21 (6 pts)**

**Lead in Period: Lady Knights 48 Commodores 45 (3 pts)**

**3 for 0 oppo pts**

**1 for 1 pts**

**4/9 for 44.4 %**

**3/7 for 42.9 %**

**Turnovers**  
**2nd Chances**  
**Field Goals**  
**Free Throws**

**Lead Changes: 15 Ties: 9**  
**Lead Changes: 2 Ties: 4 (this period)**

**5 for 3 oppo pts**

**0 for 0 pts**

**4/7 for 57.1 %**

**4/4 for 100 %**

**2003 Houchens Industries/KHSAA Girls' Sweet 16 - Play by Play Report - Period: OT (pg 1)**  
**Lexington Catholic Lady Knights vs. Perry County Central Commodores**  
**Date: 03/26/2003 Time: Noon CST Site: Bowling Green, KY Attendance:**

Name	Action	Action	Score	Clock	Diff	Name	Action	Action
A Sickles	Enter Game	for L Bell		5 4:00				
A Sickles	Jump Ball Win			5 3:59		B Maggard	Jump Ball Loss	
C Chowning	3Pt Attempt	N Davis Off Reb		5 3:48				
N Davis	Layup Made		51-49	5 3:38	+2			
N Davis	Personal Foul		51-50	5 3:32	+1	P Sebastian	FT Made	
			51-51	5 3:32	(T10)	P Sebastian	FT Made	
S Novosel	FG Made		53-51	5 3:20	+2			
				5 3:09		N Young	Turnover	(Fumble)
				5 2:52		D Caudill	Enter Game	for N Young
S Schell	3Pt Made	N Davis Assist	56-51	5 2:50	+5			
				5 2:40		PCC	Time Out	
C Chowning	Def Rebound			5 2:27		C Napier	Layup Att	
S Novosel	Layup Made	C Chowning Assist	58-51	5 2:19	+7			
				5 2:09		P Sebastian	Turnover	(Bad Pass)
S Schell	Steal			5 2:07				
S Schell	Layup Made		60-51	5 2:06	+9			
				5 2:03		PCC	Time Out	
				5 2:03		N Young	Enter Game	for D Caudill
N Davis	Personal Foul		60-52	5 2:01	+8	P Sebastian	FT Made	
			60-53	5 2:01	+7	P Sebastian	FT Made	
				5 1:15		N Young	Personal Foul	
L Bell	Enter Game	for A Sickles		5 1:15				
N Davis	FT Made		61-53	5 1:15	+8			
N Davis	FT Attempt			5 1:15		B Maggard	Def Rebound	
R Carney	Enter Game	for N Davis		5 1:13				
R Rhule	Enter Game	for S Schell		5 1:13				
			61-55	5 1:02	+6	P Sebastian	FG Made	
S Schell	Enter Game	for S Novosel		5 0:40				
C Chowning	FT Made		62-55	5 0:29	+7	C Napier	Personal Foul	
C Chowning	FT Made		63-55	5 0:29	+8			
				5 0:19		P Sebastian	FG Attempt	P Sebastian Off Re
			63-57	5 0:17	+6	P Sebastian	Putback Made	
				5 0:16		PCC	Time Out	
S Schell	FT Made		64-57	5 0:14	+7	P Sebastian	Personal Foul	
S Schell	FT Made		65-57	5 0:14	+8			
				5 0:11		PCC	Time Out	
				5 0:11		E Brashear	Enter Game	for K Combs
R Rhule	Leave Game			5 0:11				
S Schell	Leave Game			5 0:11				
C Chowning	Leave Game			5 0:11				
L Bell	Leave Game			5 0:11				
L Server	Enter Game	for R Carney		5 0:11				
R Rhule	Enter game			5 0:11				
R Carney	Enter game			5 0:11				
L Bell	Enter game			5 0:11				
M Mendenhall	Enter game			5 0:11				
				5 0:11		K Combs	Enter Game	for N Young
			65-60	5 0:05	+5	E Brashear	3Pt Made	B Maggard Assist

**End of Period Summary Lady Knights 65 Commodores 60**

**Largest Lead: Lady Knights 60 Commodores 51 (9 pts)**

**Lead in Period: Lady Knights 60 Commodores 51 (9 pts)**

**0 for 0 oppo pts**

**1 for 2 pts**

**5/6 for 83.3 %**

**5/6 for 83.3 %**

**Turnovers**

**2nd Chances**

**Field Goals**

**Free Throws**

**Lead Changes: 15 Ties: 10**

**Lead Changes: 0 Ties: 1 (this period)**

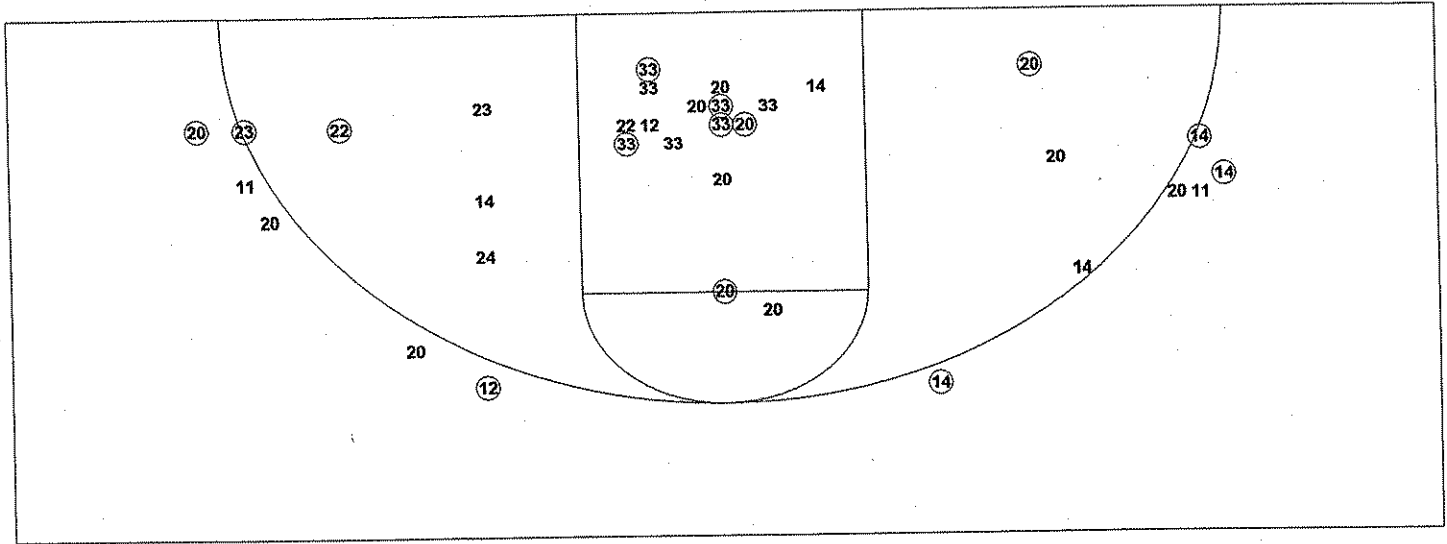
**2 for 5 oppo pts**

**1 for 2 pts**

**3/5 for 60.0 %**

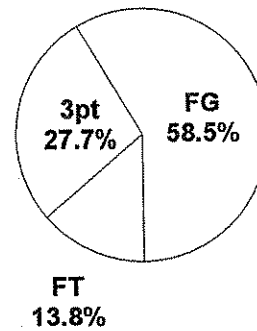
**4/4 for 100 %**

2003 Houchens Industries/KHSAA Girls' Sweet 16 - TEAM SHOT CHART for the Lexington Catholic Lady Knights  
 Lexington Catholic Lady Knights vs. Perry County Central Commodores  
 DATE: 03/26/2003 TIME: Noon CST SITE: Bowling Green, KY

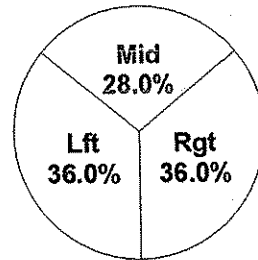


Shot Summary	M/A	%	PTS
3Pt FG	6/12	50.0%	18
2Pt FG	19/39	48.7%	38
Layups - L	5/7	71.4%	10
Layups - R	5/6	83.3%	10
Dunks	0/0	0.0%	0
Putbacks	1/4	25.0%	2
Overall Shooting	25/51	49.0%	56
Free Throws	9/18	50.0%	9
Total Points			65

Scoring Distribution

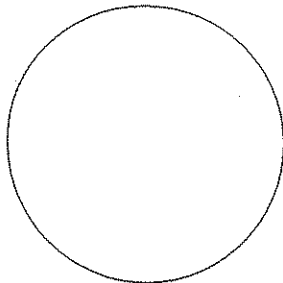


Scoring Locations

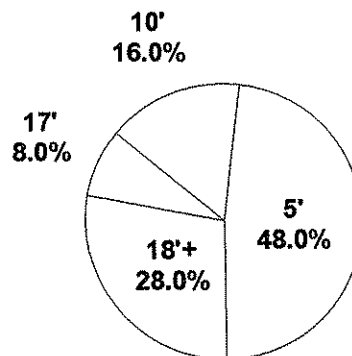


By Period	FG	FGA	FG%	3Pt	3PA	3P%	FT	FTA	FT%	PTS	ORB	DRB	TR	PF	AST	TO	BS	ST	P/S
1st Period	6	15	40.0	3	5	60.0	0	1	0.00	15	4	3	7	4	5	2	3	0	1.00
2nd Period	5	13	38.5	1	2	50.0	1	1	100	12	3	2	5	2	2	3	1	3	0.92
3rd Period	5	8	62.5	0	1	0.00	0	3	0.00	10	1	2	3	6	2	5	3	1	1.11
4th Period	4	9	44.4	1	2	50.0	3	7	42.9	12	1	3	4	2	2	3	0	3	1.00
OT 1	5	6	83.3	1	2	50.0	5	6	83.3	16	1	1	2	2	2	0	0	1	1.78
Game	25	51	49.0	6	12	50.0	9	18	50.0	65	10	11	21	16	13	13	7	8	1.08

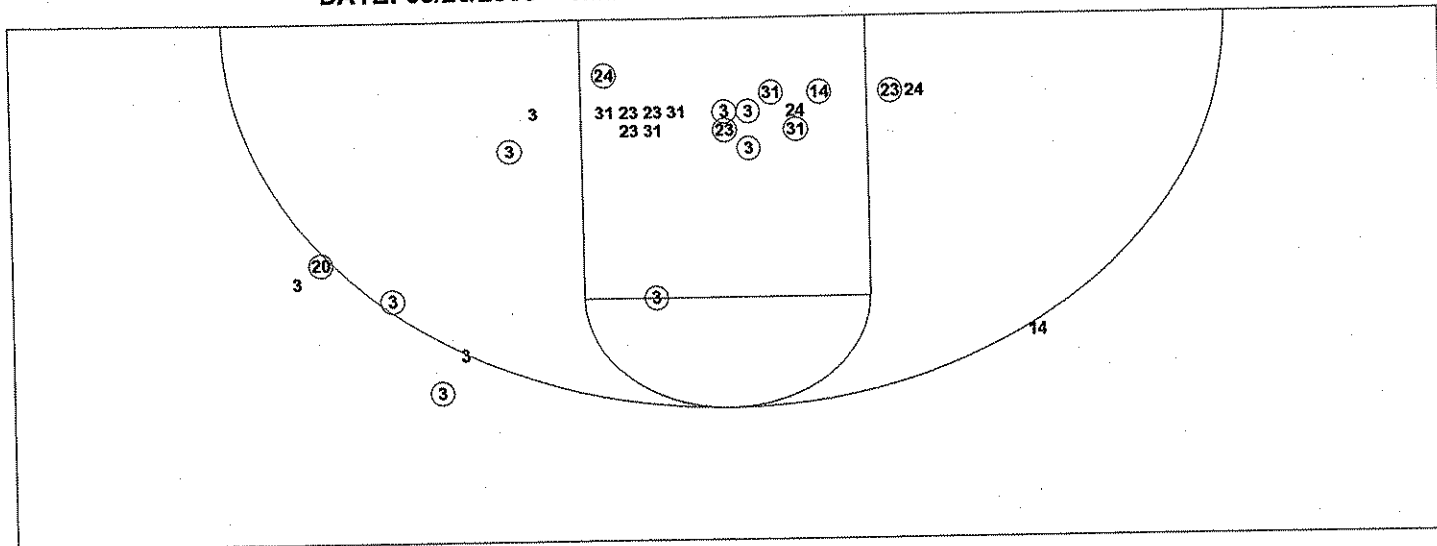
Scoring Breakdown



Scoring Range

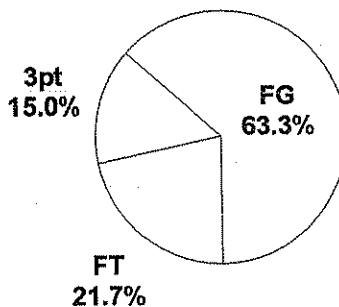


2003 Houchens Industries/KHSAA Girls' Sweet 16 - TEAM SHOT CHART for the Perry County Central Commodores  
 Lexington Catholic Lady Knights vs. Perry County Central Commodores  
 DATE: 03/26/2003 TIME: Noon CST SITE: Bowling Green, KY

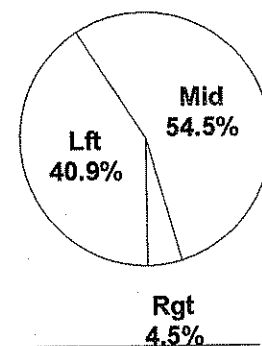


Shot Summary	M/A	%	PTS
3Pt FG	3/6	50.0%	9
2Pt FG	19/35	54.3%	38
Layups - L	5/10	50.0%	10
Layups - R	0/1	0.0%	0
Dunks	0/0	0.0%	0
Putbacks	3/4	75.0%	6
Overall Shooting	22/41	53.7%	47
Free Throws	13/19	68.4%	13
Total Points			60

Scoring Distribution

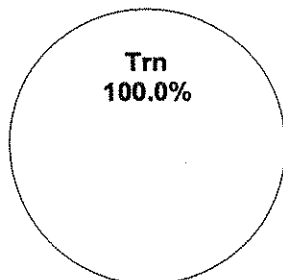


Scoring Locations



By Period	FG	FGA	FG%	3Pt	3PA	3P%	FT	FTA	FT%	PTS	ORB	DRB	TR	PF	AST	TO	BS	ST	P/S
1st Period	7	13	53.8	0	0	0.00	3	5	60.0	17	4	6	10	2	2	2	0	1	1.13
2nd Period	2	5	40.0	0	0	0.00	2	4	50.0	6	2	5	7	1	1	7	0	1	0.86
3rd Period	6	11	54.5	2	3	66.7	0	2	0.00	14	4	3	7	2	2	4	0	4	1.17
4th Period	4	7	57.1	0	2	0.00	4	4	100	12	0	7	7	6	2	5	0	2	1.33
OT 1	3	5	60.0	1	1	100	4	4	100	11	1	1	2	3	1	2	0	0	1.57
Game	22	41	53.7	3	6	50.0	13	19	68.4	60	11	22	33	14	8	20	0	8	1.20

Scoring Breakdown



Scoring Range

